

FLOW-TEES

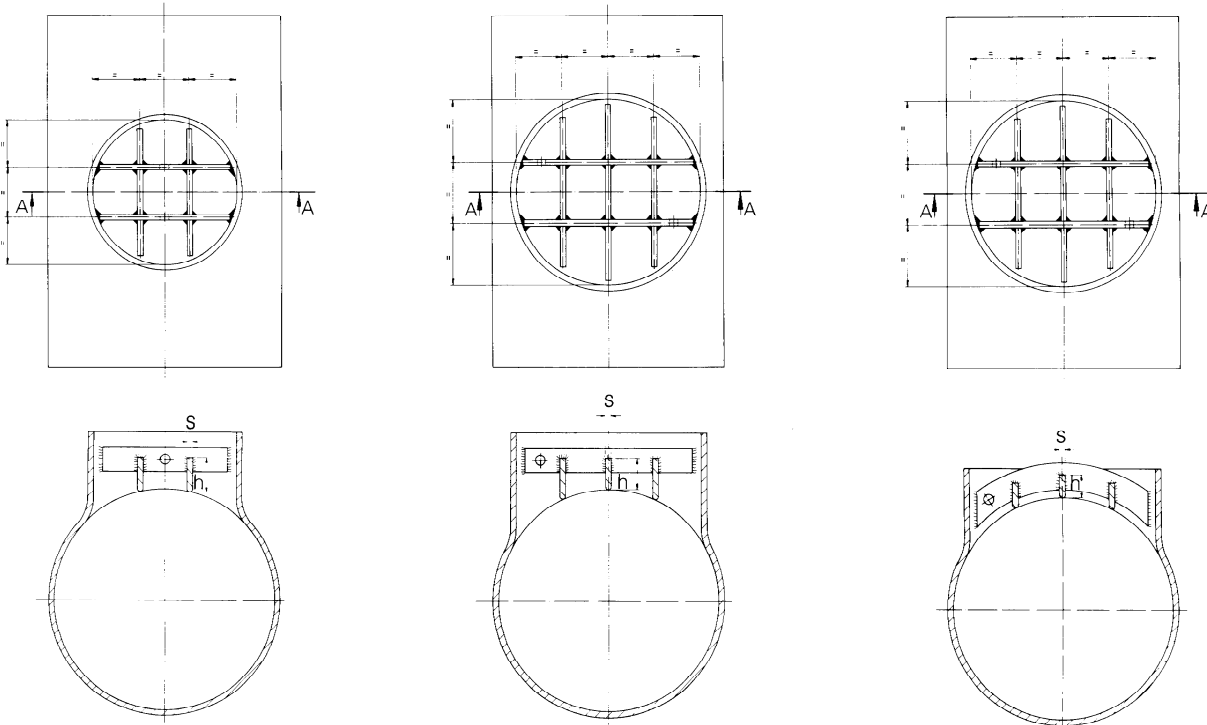


Tee with guide bars -
see recommendation on next page.



Sphere Tees for special pigging.
On request also in other design versions.

Tees for pigging



Other versions on request.

Scraper guides are adapted to the internal shape.

Welding is possible after the heat treatment of the tee, but a proper preheating of the relevant welding zones is recommended.

RMA recommendation for scraper bars

Branch DN	h mm	s mm	Run pipe DN															
			48"	42"	40"	36"	32"	28"	24"	22"	20"	18"	16"	14"	12"	10"	8"	6"
6"	35	8																
8"	40	8																
10"	50	8																
12"	55	8																
14"	60	10																
16"	60	10																
18"	65	10																
20"	70	10																
22"	75	15																
24"	75	15																
28"	90	20																
32"	100	20																
36"	110	20																
40"	120	20																
42"	120	20																
48"	130	25																

	without guide bars
	with 1 guide bar
	with 2 guide bars
	with 3 guide bars
	with 4 guide bars
	with 5 guide bars

Technical modification reserved

12-96-221