

## QUICK-PIG



### Compact

The alternative to large and expensive concrete construction shafts, the new innovative QUICK-PIG pigging station. Due to the compact construction, the QUICK-PIG station can be installed under a commercially available manhole cover, close at hand to the pipelines and cables.

### Quick

With the new QUICK-PIG station, the necessity to check for gas and potential pumping dry the shaft disappears. The operation of the station is simple and functional. The cover of the station is opened, the unit with the bayonet connection is removed, a commercially available pig is placed in the holder and the unit including the pig is placed back into the station. Finally, turn the bayonet connection and the pig is in the launch position.

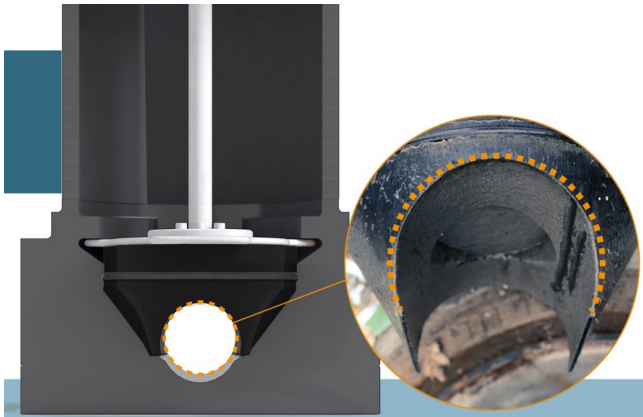
### Inexpensive

Due to the innovative and compact method of construction, the procurement and installation costs are less than the usual maintenance shafts. The uncomplicated application in daily maintenance activities reduce the consequential costs to a minimum.

### Individual and adaptable

The QUICK-PIG station can be adapted for every pig and pipe diameter, as also can the depth of installation. The branch of the station can be provided with various options; long spigot ends, push-fit couplers or flange connectors.

## Information + Options



Full throughput and possibility of checking the condition of the line



Possibility of second/extra effort to receive cleaning pigs



Possibility to launch from the Quick Pig station



Indication for cleaning pig in station

## Quick-Pig piggings station

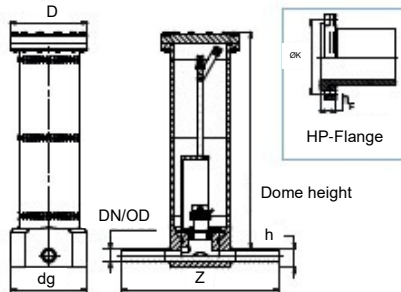
- Max. operating pressure: 10 bar
- Dome heights from 600 up to 2000 mm
- Basicversion with launcher and two pigs

Optional - Flange and/or REINOGRIP connection  
- Rinsing connection via quick coupling

Application - For launching and receiving pigs, inspection of the pipeline.  
Safe operation of the station from ground level



Basis version



Pipe dimension acc. to:  
DIN EN 12201

Design acc. to:  
DIN EN 1671, DWA-A 116-2

Total height:  
h (acc.to version) + dome height

| SDR | ≥ 41 | 33 | 26 | 21 | 17,6 | 17 | 13,6 | 11 | 9 | 7,4 | 6 | ≤ 5 |
|-----|------|----|----|----|------|----|------|----|---|-----|---|-----|
|-----|------|----|----|----|------|----|------|----|---|-----|---|-----|

| DN/OD | Head<br>Ø | Body<br>Ø | Connection:<br>Spigot |     | Connection:<br>HP-Flanges |     |     |     |        |       |                | Connection:<br>REINOGRIP |     |
|-------|-----------|-----------|-----------------------|-----|---------------------------|-----|-----|-----|--------|-------|----------------|--------------------------|-----|
|       | D         | Dg        | Z (+40)               | h   | Z (±10)                   | h   | DN  | ØK  | n x ØL | Bolts | h <sub>F</sub> | Z (±10)                  | h   |
| 63    | 360       | 355       | 720                   | 88  | 645                       | 113 | 50  | 125 | 4x18   | M16   | 36             | -                        | -   |
| 75    | 360       | 355       | 720                   | 100 | 665                       | 130 | 65  | 145 | 8x18   | M16   | 37             | -                        | -   |
| 90    | 360       | 355       | 720                   | 115 | 685                       | 145 | 80  | 160 | 8x18   | M16   | 40             | 660                      | 165 |
| 110   | 395       | 410       | 770                   | 135 | 770                       | 165 | 100 | 180 | 8x18   | M16   | 43             | 780                      | 185 |
| 125   | 395       | 410       | 770                   | 150 | 810                       | 172 | 100 | 180 | 8x18   | M16   | 51             | 790                      | 195 |
| 140   | 505       | 570       | 920                   | 180 | 1010                      | 202 | 125 | 210 | 8x18   | M16   | 57             | -                        | -   |
| 160   | 505       | 570       | 920                   | 200 | 1040                      | 222 | 150 | 240 | 8x22   | M20   | 63             | 980                      | 200 |
| 180   | 505       | 570       | 920                   | 220 | 1060                      | 232 | 150 | 240 | 8x22   | M20   | 65             | 1040                     | 220 |
| 200   | 670       | 720       | 1060                  | 253 | 1240                      | 270 | 200 | 295 | 8x22   | M20   | 65             | 1230                     | 253 |
| 225   | 670       | 720       | 1060                  | 265 | 1280                      | 282 | 200 | 295 | 8x22   | M20   | 65             | 1240                     | 265 |

On request up to OD 355

| Dome height (mm) |
|------------------|
| 600              |
| 700              |
| 800              |
| 900              |
| 1000             |
| 1100             |
| 1200             |
| 1300             |
| 1400             |
| 1500             |
| 1600             |
| 1700             |
| 1800             |
| 1900             |
| 2000             |

### Additional options



### Accessories and Tools



Abwandresse oder -stempel

Bauvorhaben

☐ Richtpreis ☐ Submission ☐ Bedarf

Bemerkung

Geplanter Ausführungstermin

Datum

## 1 Beschreibung der Leitung

Rohrleitungswerkstoff

☐ PE ☐ PVC

☐ Andere Werkstoffe (di \_\_\_\_\_)

Außendurchmesser DA \_\_\_\_\_

SDR oder Wanddicke \_\_\_\_\_

Medium \_\_\_\_\_

Betriebsdruck \_\_\_\_\_ bar

Rohrdeckung \_\_\_\_\_ mm

## Einbaumaße

Bitte entnehmen Sie die Einbaumaße dem

Quick-Pig Datenblatt. Falls Ihre Maße

abweichen, tragen Sie diese bitte hier ein:

Einbaumaß: **Z** \_\_\_\_\_ mm

## 2 Quick-Pig Molchstation Anfrage über \_\_\_\_\_ Stk.

Quick-Pig Molchstation beinhaltet:

- Molchschleuse und Deckel
- Molchsender
- Testmolch
- Reinigungsmolch



Alternativ zu Standard Molchsender



## 3 Optionales Zubehör Einsätze für Station

**E** — st. Molchsender mit Storz-Kupplung  
O 2" O 4" (ab Größe da 200)

**F** — st. Molchempfänger mit Storz-Kupplung  
O 2" O 4" (ab Größe da 200)

**G** — st. Molchempfänger

## Werkzeug

**H** — st. Press-Hebel  
Erlaubt das Verpressen  
der Molchschleuse

**I** — st. Unterflurhydrantenschlüssel  
Typ C, Innendrehmoment 32 Nm

## Anschlüsse

Bitte Eingang **In** und Ausgang **Out** eintragen:

☐ **J** Flansch ☐ **In** ☐ **Out**  
☐ Armaturanschluss DN \_\_\_\_\_

☐ **K** REINOGRIP ☐ **In** ☐ **Out**  
Sollte nur ein Anschluss angekreuzt sein, wird  
die andere Seite mit Spitzendringbohrer