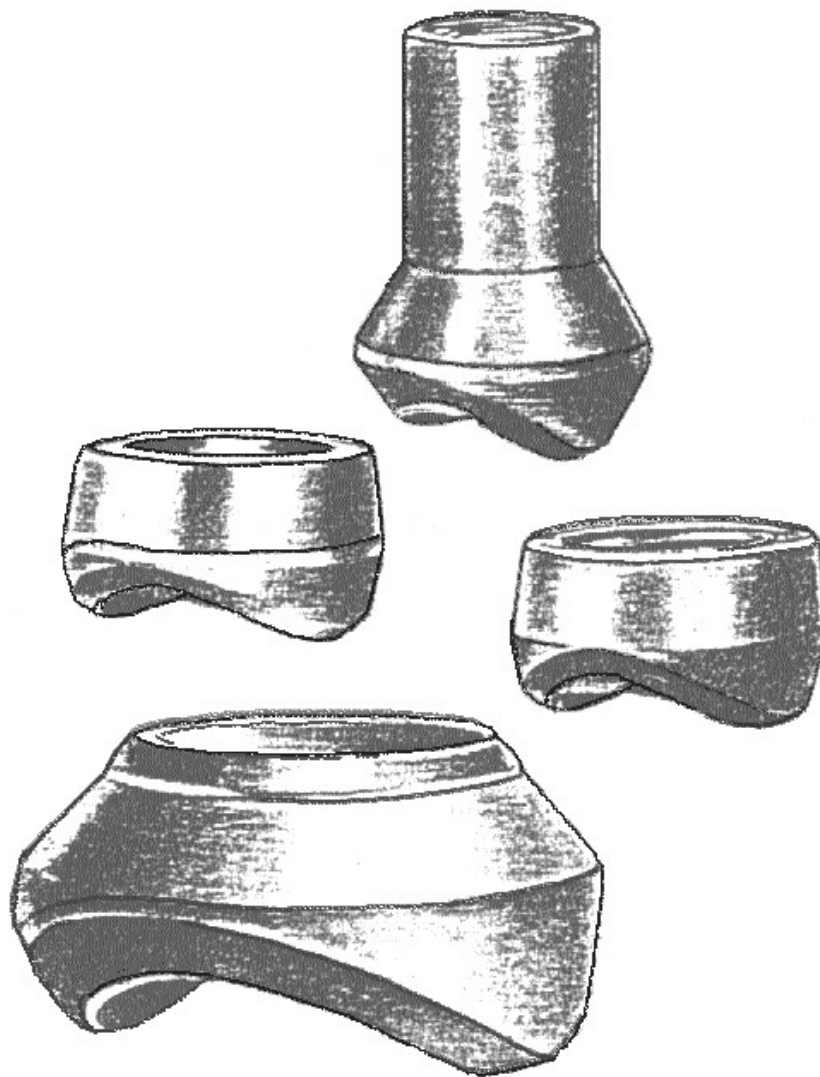
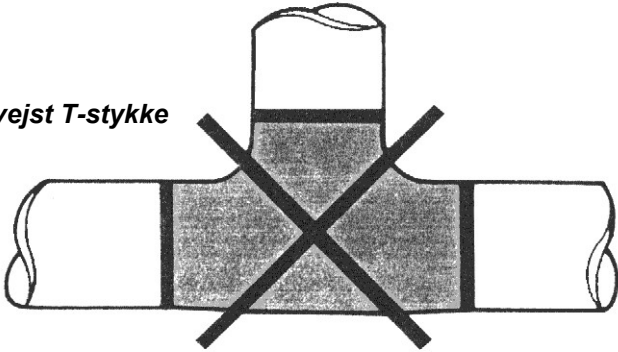


O-LETTER TERMOSTUDSE



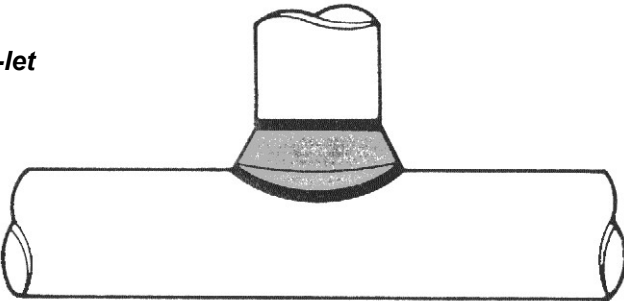
**Hvor og hvornår?
- Brugen af svejseafgreninger**

Svejst T-stykke



1. Overalt hvor svejsefittings er påkrævet.

O-let



2. Fordi O-letter erstatter det svejsede T-stykke med en omkostning på materiale og installation fra 40% til 80% lavere.

.. Og fremfor alt er der opretholdt fuld lysning i overensstemmelse med ANSI B16.9, ANSI B31.1 og ANSI B31.3

O-letter leveres færdige for svejsning

<p><i>Skitse og snithul</i></p>	<p><i>Svejsning</i></p>	<p><i>R = Svejserod</i> <i>P = Fuld gennemsvajsning</i></p>
---------------------------------	-------------------------	---

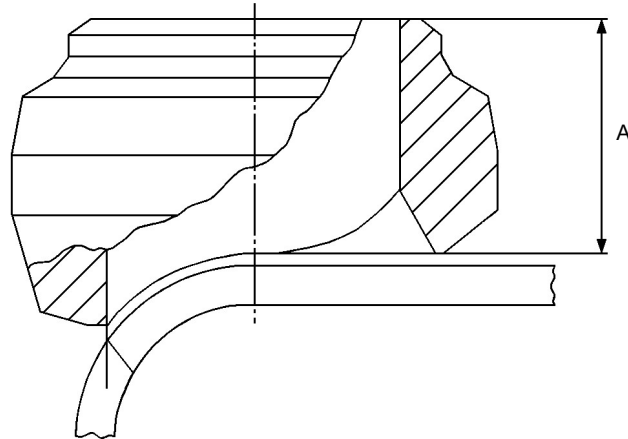
WELDOLETTER, THREDOLETTER OG SOCKOLETTER Rørdimensioner

MEGALET BW, SW, NPT - RUN PIPE SIZE RANGE								
Schedule STD, XS, 40S, 80S - Class 3000								
BRANCH		RUN PIPE		BRANCH		RUN PIPE		
NPS (DN)	WT	NPS (DN) min	NPS (DN) max	NPS (DN)	WT	NPS (DN) min	NPS (DN) max	
8 (200)	STD XS STD/XS	3/8 (10)	80 (2000)	8 (200)	STD XS STD/XS	10 (250)		
		1/2 (15)	80 (2000)			12 (300)		
		3/4 (20)	80 (2000)			14 (350)		
	STD XS STD/XS	1 (25)	2-1/2 (65)		STD	16 (400)		
		3 (80)	80 (2000)			18 (450)	20 (500)	
	STD XS STD/XS	1-1/4 (32)	2-1/2 (65)			22 (550)	26 (650)	
		3 (80)	80 (2000)			28 (700)	34 (850)	
	STD XS STD/XS	1-1/2 (40)	2 (50)			36 (900)	50 (1250)	
		2-1/2 (65)	6 (150)			52 (1300)	72 (1800)	
		8 (200)	80 (2000)		16 (400)	18 (450)		
	STD XS STD/XS	1-1/2 (40)	2 (50)		2-1/2 (65)	XS STD/XS	20 (500)	22 (550)
			3 (80)		6 (150)		24 (600)	30 (750)
8 (200)			80 (2000)	32 (800)	44 (1100)			
2-1/2 (65)			3 (80)	46 (1150)	72 (1800)			
10 (250)	STD XS STD/XS	2-1/2 (65)	3 (80)	10 (250)	STD XS STD/XS	12 (300)		
		3-1/2 (90)	6 (150)			14 (350)		
		8 (200)	80 (2000)			16 (400)		
	STD XS STD/XS	2-1/2 (65)	3 (80)		4 (100)	STD	18 (450)	
			6 (150)		14 (350)		20 (500)	
			16 (400)		80 (2000)		22 (550)	24 (600)
	STD XS STD/XS	3 (80)	3-1/2 (90)		4 (100)		26 (650)	28 (700)
			6 (150)		8 (200)		30 (750)	34 (850)
			10 (250)		24 (600)		36 (900)	42 (1050)
			26 (650)		80 (2000)	44 (1100)	56 (1400)	
	STD XS STD/XS	4 (100)	6 (150)		XS STD/XS	20 (500)	22 (550)	
			8 (200)			10 (250)	24 (600)	26 (650)
12 (300)			20 (500)	28 (700)		32 (800)		
STD XS STD/XS	4 (100)	22 (550)	72 (1800)	34 (850)		40 (1000)		
		8 (200)		42 (1050)		52 (1300)		
		10 (250)		54 (1350)		72 (1800)		
		12 (300)	14 (350)					
STD XS STD/XS	6 (150)	16 (400)	20 (500)					
		22 (550)	30 (750)					
		32 (800)	56 (1400)					
		22 (550)	32 (800)					
		34 (850)	68 (1700)					

STD XS STD/XS	= suitable for Sch.STD, XS, STD/XS
STD	= suitable only for Sch.STD
XS STD/XS	= suitable for Sch.XS, STD/XS

THIS DOCUMENT IS PROPERTY OF M&AA. S.P.A. ALL RIGHTS RESERVED. ©

WELDOLETTER
Dimensionstabel
Iht. MSS-SP97

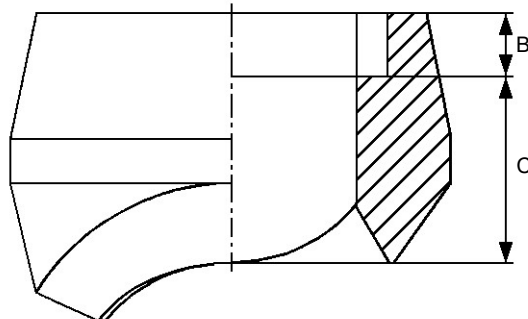


Outlet (DN)	Outlet (NPS)	A (Face of Fitting to Crotch)	
		Standard	Extra strong
6	1/8	-	-
8	1/4	-	-
10	3/8	-	-
15	1/2	19.1	19.1
20	3/4	22.4	22.4
25	1	26.9	26.9
32	1 1/4	31.8	31.8
40	1 1/2	33.3	33.3
50	2	38.1	38.1
65	2 1/2	41.1	41.1
80	3	44.4	44.4
90	3 1/2	50.8	50.8
100	4	50.8	50.8
125	5	57.2	57.2
150	6	60.4	77.7
200	8	69.8	98.6
250	10	77.7	88.9
300	12	85.9	100.1
350	14	88.9	104.6
400	16	93.7	112.8
450	18	103.1	119.1
500	20	117.3	127.0
600	24	136.6	139.7

Tolerancer: 6-20 ±0.8 mm
25-100 ±1.6 mm
125-300 ±3.2 mm
350-600 ±4.8 mm

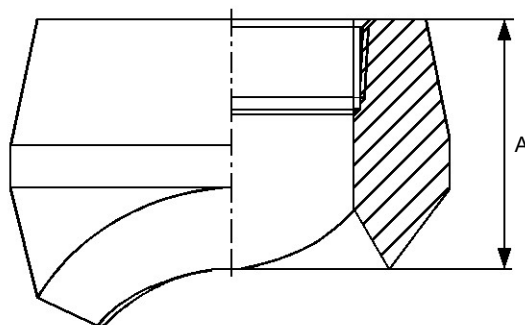
SOCKOLETTER OG THREDOLETTER
Dimensionstabel
Iht. MSS-SP97

Socketlet



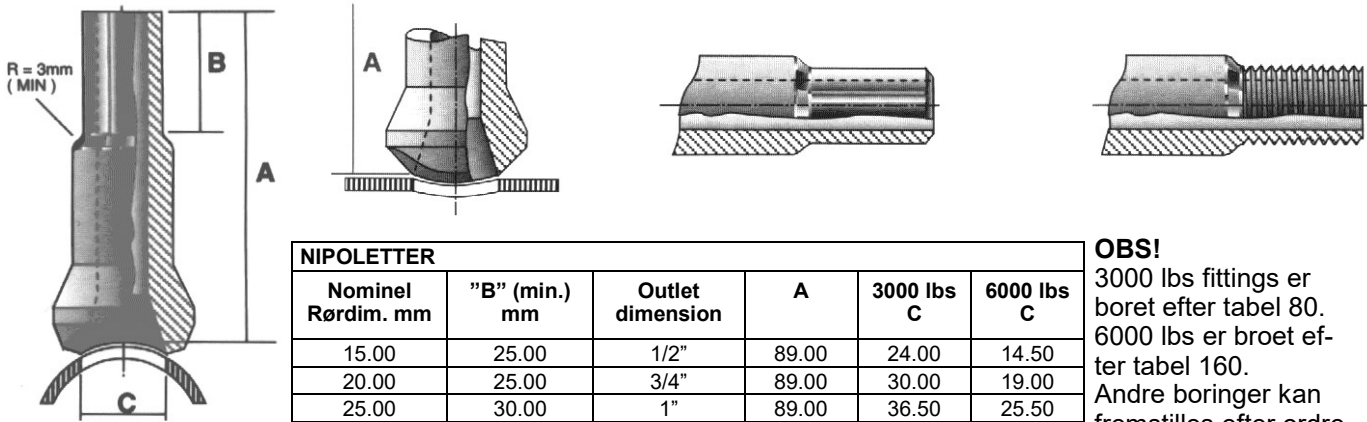
Outlet (DN)	Outlet (NPS)	B min (a)	C max	
			Class 3000	Class 6000
6	1/8	9.5	11	-
8	1/4	9.5	11	-
10	3/8	9.5	13	-
15	1/2	9.5	16	24
20	3/4	12.5	16	26
25	1	12.5	23	29
32	1 1/4	12.5	23	31
40	1 1/2	12.5	24	32
50	2	16.0	24	37

Thredolet



Outlet (DN)	Outlet (NPS)	A Nom. (Face of fittings to crotch) Threaded	
		Class 3000	Class 6000
6	1/8	19.0	-
8	1/4	19.0	-
10	3/8	20.6	-
15	1/2	25.4	31.8
20	3/4	26.9	36.6
25	1	33.3	39.6
32	1 1/4	33.3	41.1
40	1 1/2	35.0	42.3
50	2	38.1	52.3

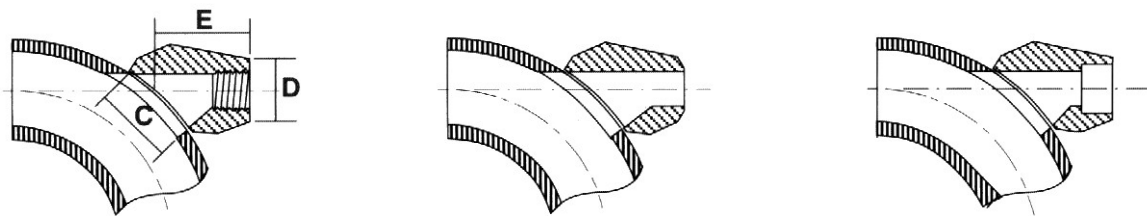
NIPOLETTER, ELBOLETTER OG LATROLETTER Dimensionstabel Iht. MSS-SP97



NIPOLETTER					
Nominal Rørdim. mm	"B" (min.) mm	Outlet dimension	A	3000 lbs C	6000 lbs C
15.00	25.00	1/2"	89.00	24.00	14.50
20.00	25.00	3/4"	89.00	30.00	19.00
25.00	30.00	1"	89.00	36.50	25.50
25.50	30.00	1 1/4"	89.00	44.50	33.40
50.00	30.00	1 1/2"	89.00	51.00	38.00
		2"	89.00	65.00	43.00

OBS!

3000 lbs fittings er boret efter tabel 80. 6000 lbs er broet efter tabel 160. Andre boringer kan fremstilles efter ordre.

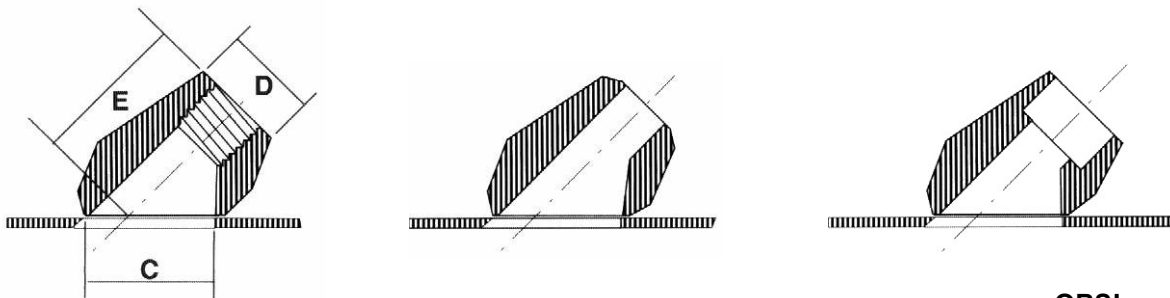


ELBOLETTER

3000 lbs for gevind og svjesning - standard og XS					6000 lbs for gevind og svejsning, sch. 160 og XXS			
Outlet dimension	C	D	E	Vægt kg	C	D	E	Vægt kg
1/2"	38.20	31.80	38.10	0.30	43.60	35.70	45.20	0.39
3/4"	43.60	35.70	45.20	0.34	54.00	45.20	52.40	0.57
1"	54.00	45.20	52.40	0.52	73.00	54.80	55.60	1.00
1 1/4"	73.00	54.80	55.60	0.86	79.40	63.50	58.80	1.77
1 1/2"	79.40	63.50	58.80	1.20	106.40	82.60	69.98	2.80
2"	106.40	82.60	69.90	2.39				

OBS!

Dimensionerne er ens for alle tre fittings undtagen "D"-målet på butt-weld'en, som er det samme som yderdiameteren på forbindelsesrøret. Større outletdiameter kan leveres.



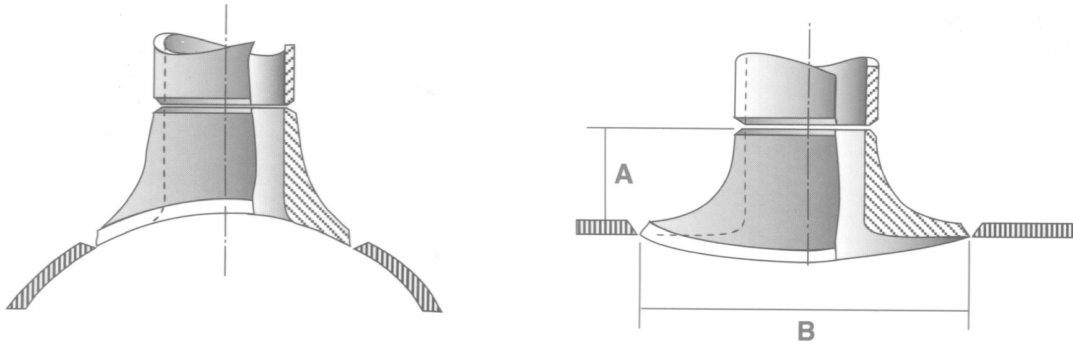
LATROLETTER

3000 lbs for gevind og svjesning - standard og XS					6000 lbs for gevind og svejsning, sch. 160			
Outlet dimension	C	D	E	Vægt kg	C	D	E	Vægt kg
1/2"	36.50	31.80	39.70	0.30	43.60	35.70	47.60	0.39
3/4"	43.60	35.70	47.60	0.34	54.00	45.20	57.20	0.57
1"	54.00	45.20	57.20	0.52	67.50	54.80	61.90	1.00
1 1/4"	67.50	54.80	61.90	0.86	76.20	63.50	66.70	1.32
1 1/2"	79.20	63.50	66.70	1.20	104.80	82.60	81.00	2.80
2"	106.80	82.60	81.00	2.39				

OBS!

Dimensionerne er ens for alle tre fittings undtagen "D"-målet på butt-weld'en, som er det samme som yderdiameteren på forbindelsesrøret. Større outletdiameter kan leveres.

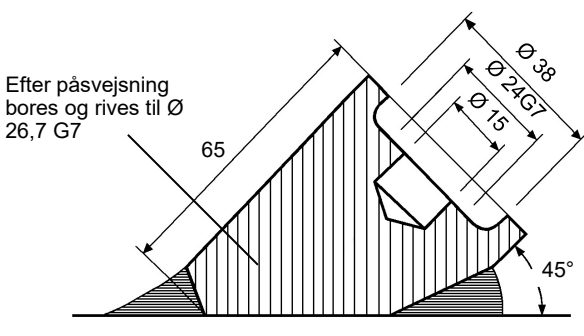
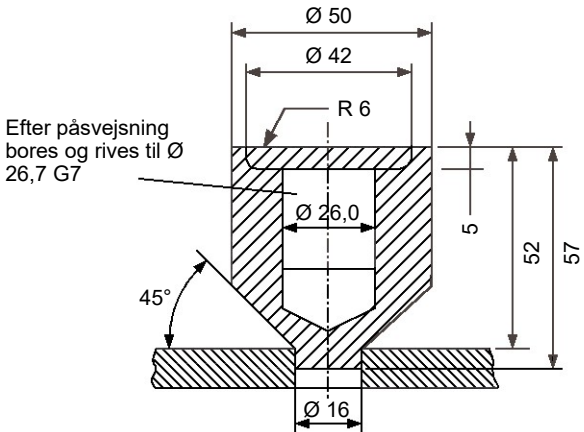
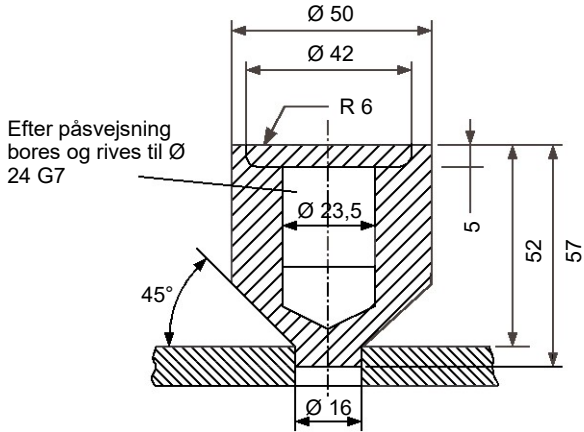
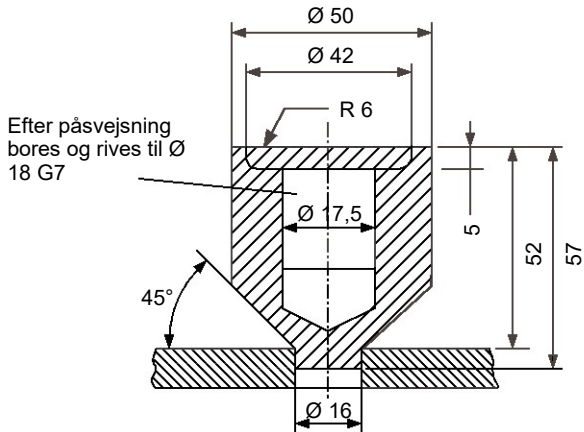
SWEEPOLETTER
Dimensionstabel



SWEEPOLETTER			
Outlet dimension	Hovedrør	A	B
1 1/2"	150-900	38.00	140.00
2"	150-900	38.00	140.00
3"	150-900	42.00	178.00
4"	200-900	52.00	222.00
6"	250-900	68.00	330.00
8"	300-900	76.00	381.00
10"	400-900	80.00	470.00
12"	400-900	83.00	520.00
16"	600-900	92.00	710.00
18"	600-900	114.00	787.00
20"	600-900	127.00	838.00
24"	750-900	140.00	965.00

1. Sweepoletter er forstærkede O-letter med lave stressfaktorer for lang levetid. Disse fittings produceres iht. International rør- og skibsstandarder. De kan ligeledes produceres efter specielle ønsker eller stressforhold.
2. Sweepoletter kan let kontrolleres efter på svejsning via røntgen eller ultralydsmåleudstyr.
3. Sweepoletterne findes i størrelser fra 1 1/2" til 48" i standard og extra strong og til meget tykke rør.
4. Materiale i alle slags carbon, rustfri og ædle ståltyper, herunder X42, X46, X56 og X60.

**COBALCH Termostuds
for indsvejsning af følerlomme**



Materiale	Certificering
S235 S355 16Mo3 13CrMo44	EN 10204 3.1.b med chargenum- mer overført til hver studs

Termostudsens påsvejses inden rør-
montage, således at spåner kan fjer-
nes.

