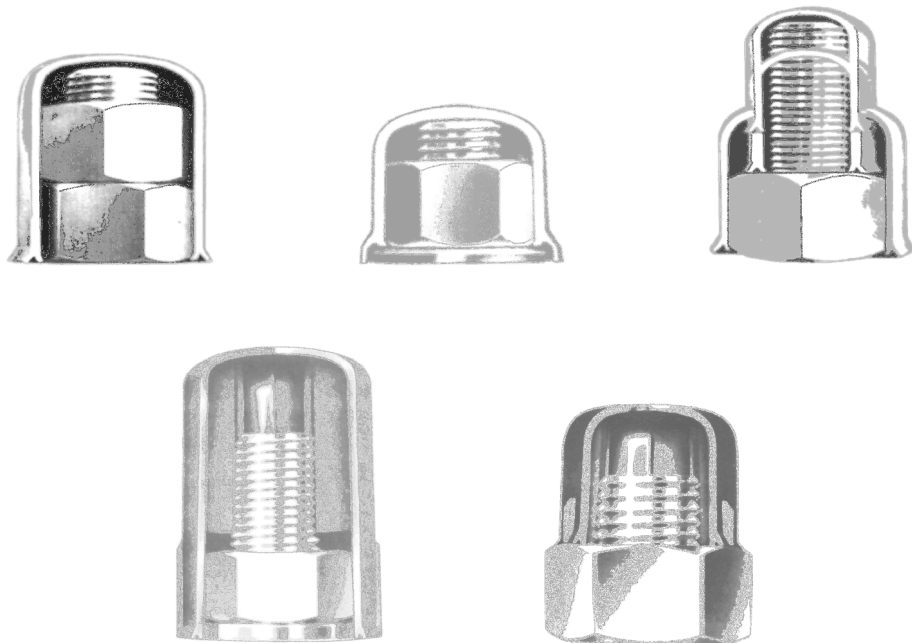




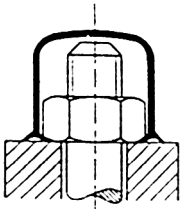
i stedet for rust



BESKYTTELSESHÆTTER

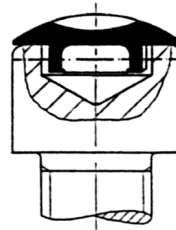
beskytter effektivt mod korrosion, idet de slutter helt tæt, og forhindrer indtrængen af fugt og kondensvand.

Typer af beskyttelseshætter



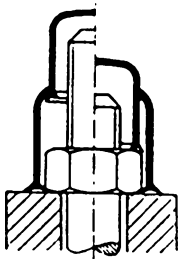
Type SW

Beskyttelseshætte til sekskantede bolte / skruer og møtrikker



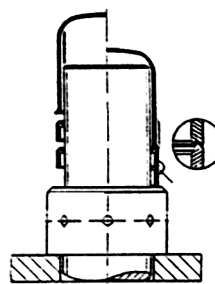
Type ISK

Beskyttelseshætte til bolte med indvendig sekskant



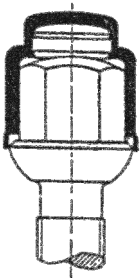
Type TSW

Beskyttelseshætte med teleskopkappe til sekskantede bolte / skruer



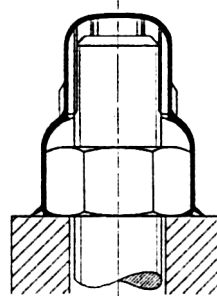
Type Ring

Afstandsring til type B + BM



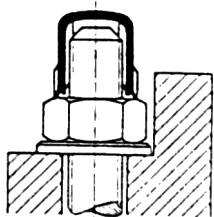
Type KSW

Beskyttelseshætte - kileformet til hjulbolte og møtrikker



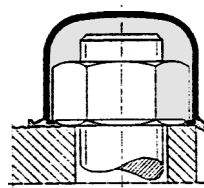
Type Com

Combi hætte



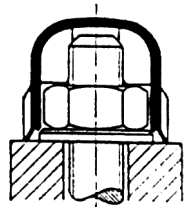
Type B

Beskyttelseshætte til lange gevindender



Type ER

Tætningsring til alle typer



Type BM

Beskyttelseshætte til møtrikker med lange gevindender

MOS

Type GREASE

Korrex fedt

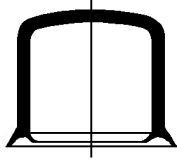
Materiale
Dimensioner
Farve

Polyetylen er standard
M3 op til M90. Rekvirer venligst dimensionsliste
Sort er standard.
Alle andre farver kan leveres ved oplysning af RAL-kode

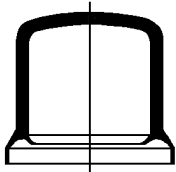
Materiale Type MAT

Thermoplastics for RADOLID CAPS						
Description of plastics	Density G/cm ³	Hardness	Temperature resistant		Breakdown voltage according to KV / mm	Note
			short-time	permanent		
STANDARD MATERIAL						
Polyethylene LD-PE	0,918	96A/45D	100° C	80° C	100 KV/mm	
Resistant against: Grease, oils, alcohol, fuels, non-oxidizing acids and lyes, water and sea water. Not resistant against: Oxidizing agents, chlorohydrocarbons.						
SPECIAL MATERIALS						
Polypropylene PP	0,905	98 A/62 D	130° C	100° C	90 KV/mm	
Resistant against: Grease, oils, fuels, detergents, water and sea water, water solutions, solutions of salts, acids and lyes. Not resistant against: Aromatic halogenized hydrocarbons, oxidizing agents such as nitric acid.						
Polyester Elastomers	1,250	98 A/72 D	160° C	120° C	23 KV/mm	
Resistant against: Grease, oils, alcohol, fuels, detergents, water and sea water, aliphatic and aromatic, compounds, 50% sulphuric acid. Not resistant against: Hydrochloric acid, fluoric acid, chlorine gases.						
Polyamide PA 66 (conditioned)	1,140	99 A/70 D	220° C	160° C	50 KV/mm	conditioned
Resistant against: Fats, oils, alcohol, fuels, detergents, water and sea water, solvents, lyes. Not resistant against: Acids, oxidizing agents.						
Ethylene Copolymer ETFE	1,700	99 A/70 D	220° C	150° C	140 KV/mm	
Resistant against: Fats, oils, chlorine, nitric acid, hydrochloric acid. Not resistant against: Fluorine, fluorine hydrocarbon, fluorine acids.						
Further persistencies on request			Information taken from technical literature, without any legal claim on us!			

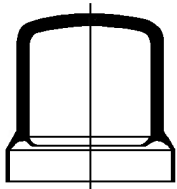
**Locking Caps
Type SW**



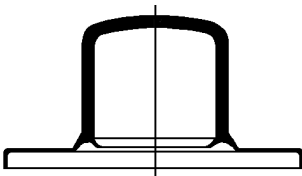
Type 1
standard, for screw joints
without washer



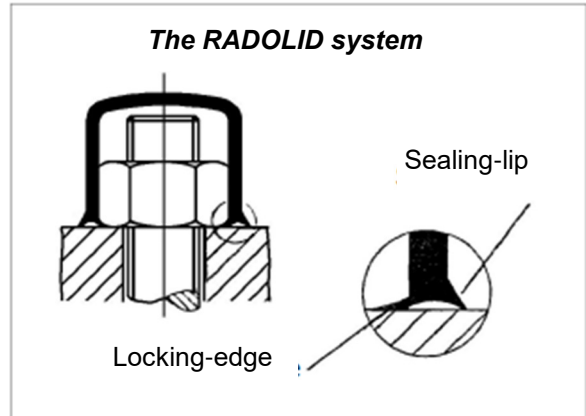
Type 2
with lengthened sealing-lip
to protect washer



Type 3
with sealing-lip for 2 or
higher washers



Type 4
with sealing-lip for wa-
shers with larger
diameter



LOCKING CAPS - type SW

- for hexagon nuts and hexagon bolts

The locking-edge

- catches behind the facet, or
- clamps because of resetting

The circular cross-section

- reduces capillary action
- compensates hexagon tolerances

Different heights

- for larger bolt lengths above nut

Easy assembly

- by hand or hammer

**Colours for
RADOLID LOCKING CAPS**

Standard colour: black RAL 9005

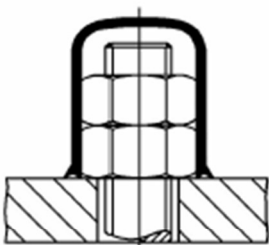
Attention: Black is especially UV-resistant, important in case of outside assembly!

Further favored colours:

white	RAL 9010
red	RAL 3000
gray	RAL 7001
blue	RAL 5012

Of course any other colours according to RAL are deliverable after consulting us.

Example for a protected screw-joint



Measure for width
Across flats

Example for term of ordering

SW 10 -1- G11, black

- Width across flats
- Type (here type 1)
- Total height inside (see drawing)
- Colour

Forbehold mod tekniske ændringer

07-24-219